



ONTRUCK INDIA

HYE-LIFT 160

AERIAL PLATFORM

**HYDROEQUIP: YOUR
PARTNER IN
REACHING
NEW HEIGHTS.**

Fibreglass basket.

Engine Start/Stop control from basket.

Kit mountable on chassis from 5 ton GVW.

Telescopic boom (2 elements) (main boom + 2 telescopic extension) - fully hydraulic platform.

360° Non-continuous turret rotation on bearing turntable.

4 hydraulic outriggers.

230V AC electric socket in the basket.

Proportional hydraulic controls in the basket.

Hydraulics components from European origin.

Turret control station equipped with manual lever control.

60° Right + 60° Left rotating basket.

Automatic basket levelling by hydraulic parallelogram.

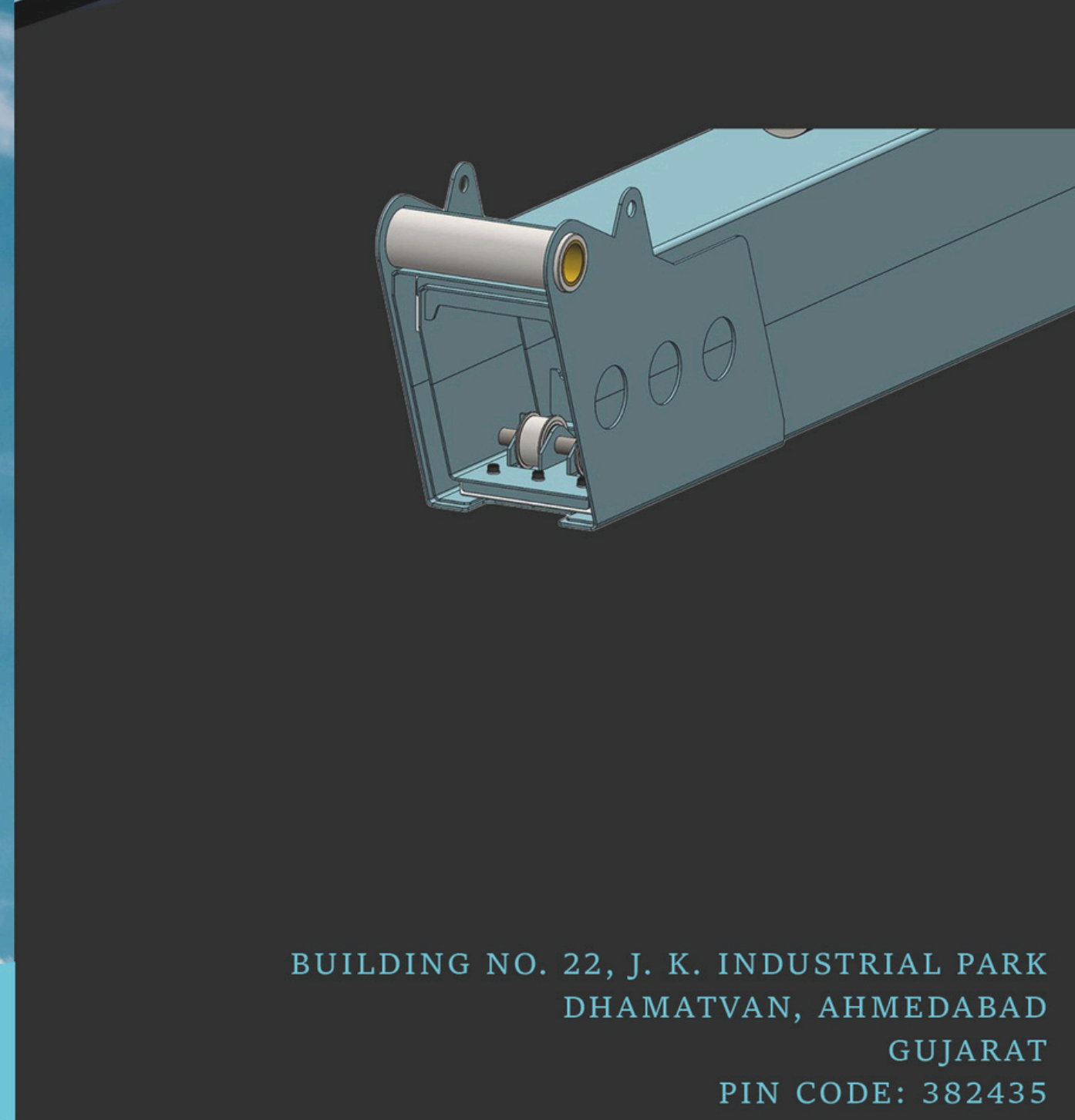
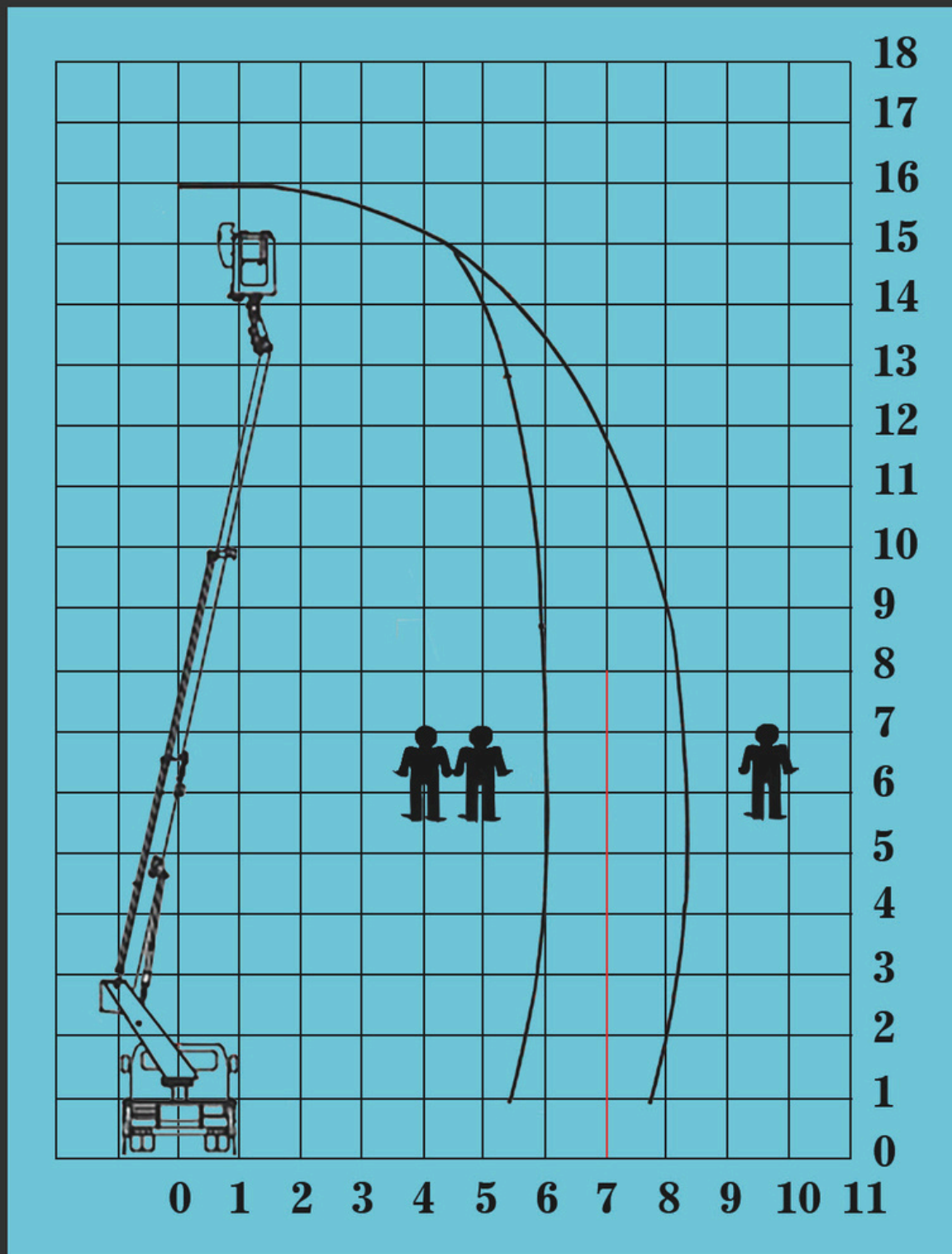
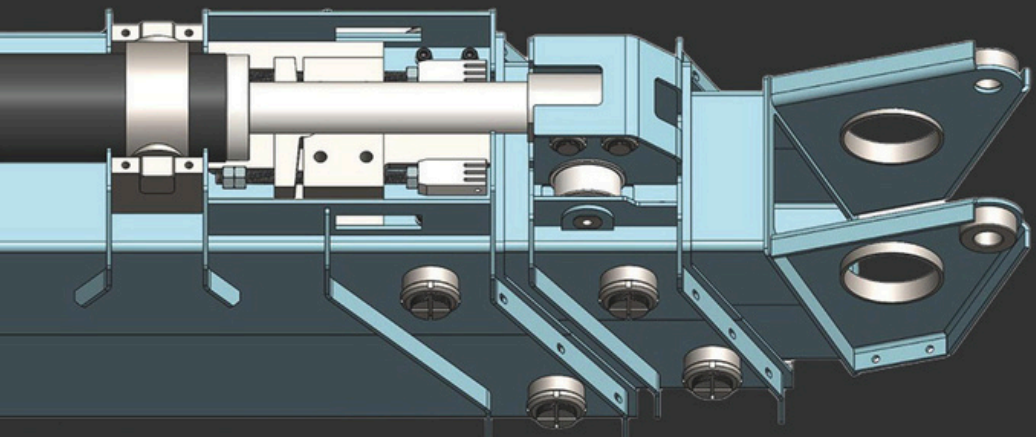




ONTRUCK INDIA
EQUIPMENT PRIVATE LTD

HYE-LIFT 160

AERIAL PLATFORM



BUILDING NO. 22, J. K. INDUSTRIAL PARK
DHAMATVAN, AHMEDABAD
GUJARAT
PIN CODE: 382435